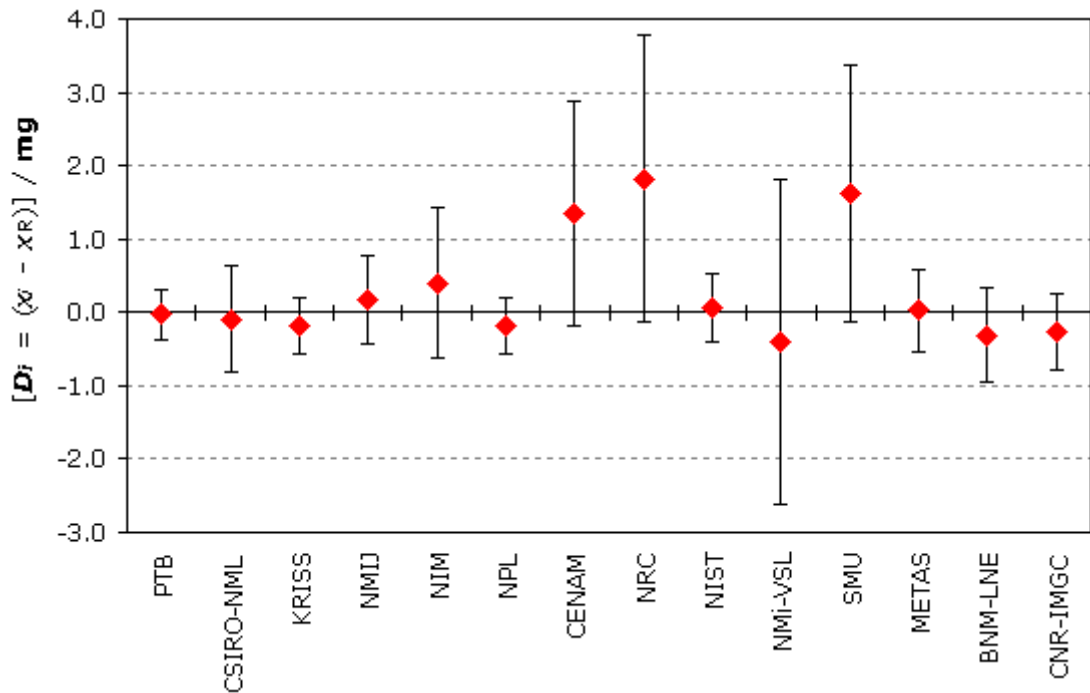


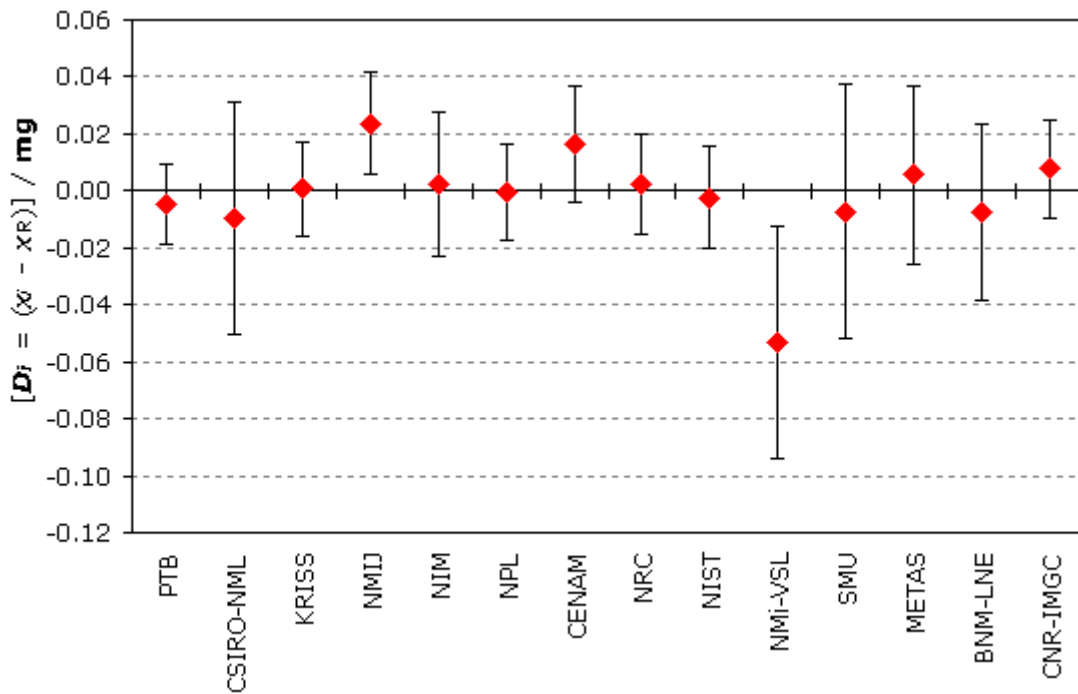
MEASURAND : Mass

NOMINAL VALUE : 10 kg

Degrees of equivalence D_i and expanded uncertainty U_i (at a 95% level of confidence) expressed in mg

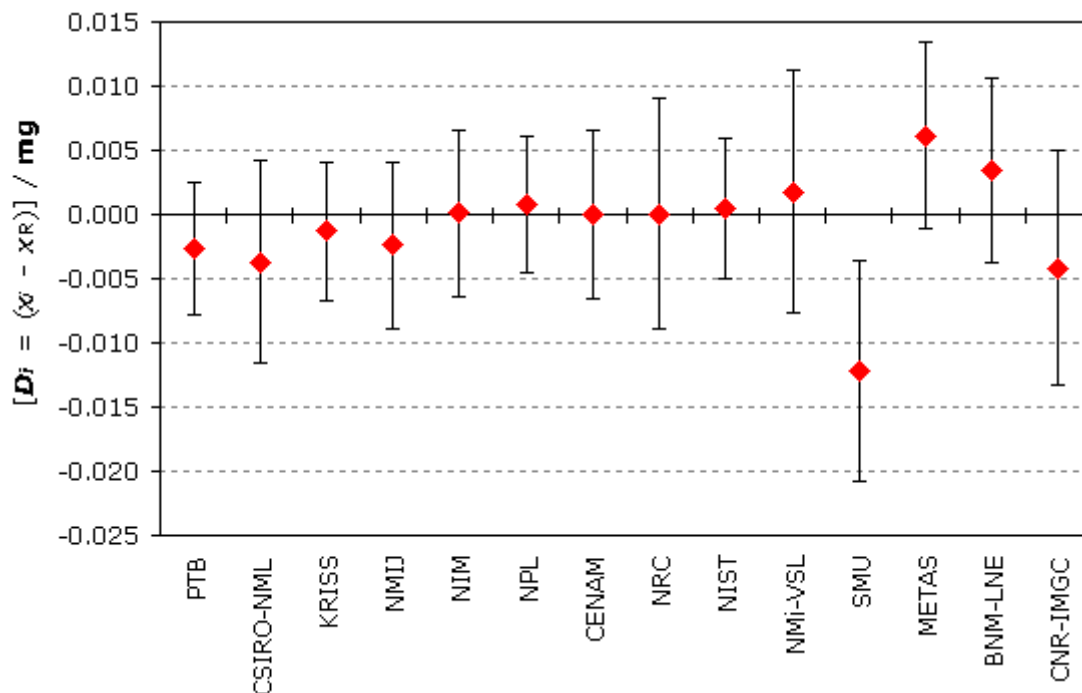
MEASURAND : Mass

NOMINAL VALUE : 500 g

Degrees of equivalence D_i and expanded uncertainty U_i (at a 95% level of confidence) expressed in mg

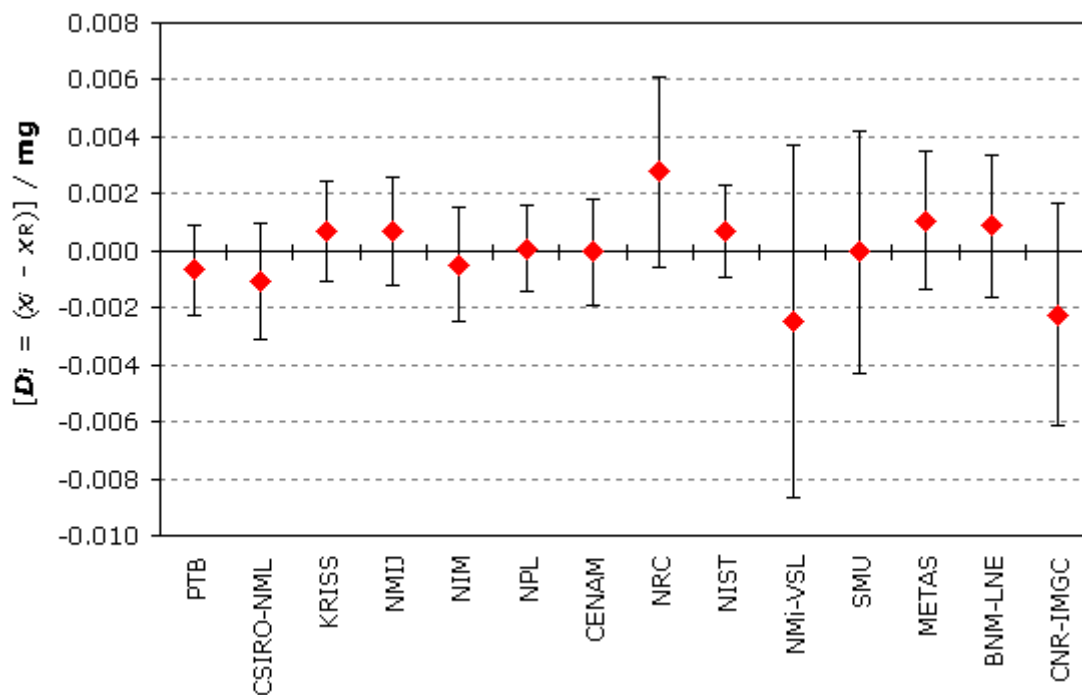
MEASURAND : Mass
NOMINAL VALUE : 20 g

Degrees of equivalence D_i and expanded uncertainty U_i (at a 95% level of confidence) expressed in mg



MEASURAND : Mass
NOMINAL VALUE : 2 g

Degrees of equivalence D_i and expanded uncertainty U_i (at a 95% level of confidence) expressed in mg



MEASURAND : Mass
NOMINAL VALUE : 100 mg

Degrees of equivalence D_i and expanded uncertainty U_i (at a 95% level of confidence) expressed in mg

